

**MAIN EVENT AUCTIONS PROUDLY PRESENTS**

# THE HEAVY AUCTION EQUIPMENT

**SATURDAY, OCTOBER 27 • 8:30 AM**

**Location:** From the stoplights in Bagley, MN, go 4 1/2 miles East on US hwy # 2. From the junction of #71 and US #2 West of Bemidji MN, go West on #2 approx 17 miles. 22601 US Hwy #2 East Bagley, MN 56621  
**Note:** Bruce was best known for a lifetime of hard work and acts of kindness. But due to his recent passing we will be selling his entire lineup of equipment, vehicles, tools, and even his household furnishings, which are of the finest quality.

## BRUCE LINDGREN ESTATE, SELLER



CASE 1150 D dozer w/ 8 way blade, all rebuilt undercarriage this spring, so 90% under carriage 7878 hrs



2008 Bobcat S160 1957 hrs good cond #529960083 w/ metal grouser tracks.



1996 Case 580 SL backhoe



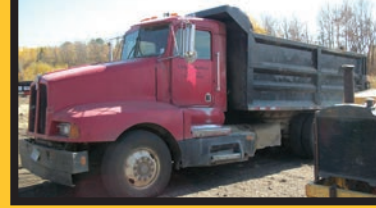
Dresser TD8G Dozer 6 way blade, 803 hrs on new motor w/ROPS.



Huber Road grader, F-1500 w/14' moldboard 4652 hrs



Cedar Rapids 1036 jaw and Roll Crusher, power unit for crusher 671 Detroit, Kolman feeder, Grizzly for crusher set at 10"



'88 Kenworth T600 Dump truck 643K.



Link Belt LS-2650 Trackhoe 9816 hrs no hydraulic pump.



Bobcat 753 w/bucket 14K hrs # 515818506



Generator 3 phase power unit w/4 cyl diesel, 230/460v 188/94 amp, approx 43K watt.



2000' 36' Prowler by Fleetwood RV w/14' slide out, frnt and rear beds, sleeps 8, awning, absolutely clean and loaded.



'95 Buick Regal, 133K miles



Bobcat 763 w/bucket 4113 hrs.



132 Shaker box



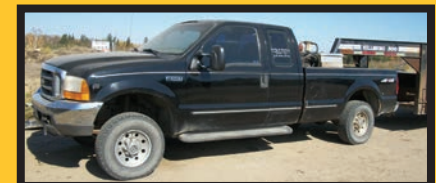
'90 Kenworth T800 dump truck w/14 yard box and tag axle, 425 CAT, 13 speed.



Case Bor Mor 400TX directional drill w/stem, 4992 hours.



'95 Load Runner enclosed trailer, insulated w/rear ramp door, 14' box tandem axle



'99 Ford Super Cab 4wd F250, V10 auto, good rubber 179K.

**BOBCAT ATTACHMENTS-** asst Bobcat buckets, Bobcat auger bits 24"-20"-18", Bobcat ISC auger head, Bobcat bucket and rake, cement bucket for Bobcat, Versatech Bobcat grapple, pallet forks for Bobcat, 72" Bob cat bucket

### EQUIPMENT

Robin EC10 whacker tamper/jumping jack, Bosch electric concrete saw, Stihl concrete saw, Robin Ex28 Power trowel, MK 2000 series wet saw w/Honda eng, 250 poly water tank in cage, roll of rebar tie wire, Aladdin mod 12-216 pt steam cleaner, Generac GP6500 6500 amp generator, plate style compactor w/Honda Engine, 115,000 BTU ready heater, Acculine laser transit and receiver and Geo top G32 laser transit and grade stick, other standard transits, Rigid pipe threader dies, ROTOR ROOTER and 3 sets of snakes, power screed and 12' aluminum board, Honda 2" water pump and some hose, 5- 12"x12"x36" treated bridge timbers, snow blade for pickup, 3 pt pto driven 9" auger, job site fencing, caution and work ahead signs, large asst equipment and truck tires, truck parts, 36" aluminum bull float, 3 jumping jack packers for parts, 6 concrete blankets, Husqvarna 562 XP chainsaw bought this year, McCulloch FR 2.3 chain saw, two 3-phase motors, 2-110 gal L shape fuel tanks, 55 gal L tank, 2 diamond plate tool boxes for pickup.

### SHOP

Millermatic 210 wire feed welder rented tank, oxy/acetylene rig rented tanks, 7 hp 80 gal 240v single stage vertical air compressor and hose reel, 2 big wood stoves for shop, gas furnace for shop, Lincoln welder 180 amp AC, air tank, 5 speed bench mount drill press, 48" pipe wrench, large asst wrenches and hand tools, mechanic's tool cabinet, ass't electric hand tools and air tools, Larin 6" bench vise, DeWalt chop saw, gear pullers, organizer trays, loads of brass fittings, 100 lb propane tank, mechanic's creeper and rolling stool, splitting maul and ass't hand and garden tools, porta power, slide hammer kit, Maverick large area shop heater propane 300,000 BTU, Miller portable arc welder, FP 100 arc welder, 2 large hydraulic cylinders approx 6"x48", shop table and vise, Husky 8 drawer rolling tool cabinet, air compressor, 20' aluminum ext. ladder, Battery charger/ starter, DeWalt angle grinder, 1" drive socket set, S&K 1/2" dr socket set, Blacksmith's leg vise, fuel barrels and stands.

### FARM

New stock tank, bale forks, new hog panels, fanning mill, tandem axle stock trailer. There will be many engines for salvage to include; Bobcat engine, 353 Detroit, 2 Payloader engines, Cummins, CAT engine out of T800 Kenworth and more

### MACHINERY-VEHICLES

5' Bush Hog 3 pt, spring tooth cultivator, 48' van body for storage just the box, box off '96 1 ton Dodge, a number of trackhoe buckets, ditching bucket, Mack logging truck w/loader - runs, 8'x20' shaker box double decker - no screens or motor, '93 GMC 1 ton dually - blown engine, International 4300 cab and engine, '92 Ford F450 flatbed - doesn't run, Asplundh brush chipper 4 cyl Ford gas eng. '95 DynaWeld heavy duty pintle hitch implement trailer, gravel screens, pull behind tandem roller compactor, '91 Ford F250 super cab 4wd 101K miles, '96 Dodge 1 ton Cummins 5 speed 4 wdr Flatbed 299K miles, tandem axle car trailer, Rosco 4" high pressure water pump w/ 6 cyl Ford gas eng, 24"x40' dozer trap w/ Continental 4 cyl gas eng, 2-24"x40' conveyers w/5 hp 3 phase motors, Barko 60 loader, '47 Lacrosse implement trailer, CSD Tree Farmer skidder - blown engine, 4'x8' single deck screener, gravel box off a truck.

### INVENTORY

INVENTORY -- piles of PVC tubing, 1-1/2" Schedule 40- 20' sections PVC over 70 pieces, there will be rolls and partial pieces of drain field pipe, plastic water pipe, pex pipe, large 5" and 4" cast iron flanges and 45's for city water and sewer, pile of 1/2" rebar, 2 partial rolls road fabric and septic fabric.

**AREA MOTELS:** Dutch Mill Motel in Bagley MN 218-694-2050, 4.5 miles West of sale, or several others in Bemidji approx 25 miles to the East.

**AIRPORTS:** Bagley Airport 218-694-2568 2.5 miles West of sale, Transportation available to sale or area motels. Bemidji Regional Airport 218-444-2438 or www.bemidjiairport.org

**Terms:** Cash or check, no cards, all items to be settled for and removed day of sale. Buyer responsible for their purchases, all items sold as/is, no warranties. Statements by auction company on sale day take precedent over all other matter. We are not responsible for accidents, errors, or omissions. **ALL OUT OF AREA CHECKS FROM MORE THAN 50 MILES AWAY MUST BE ACCOMPANIED BY A CURRENT BANK LETTER OF CREDIT AND LIEN RELEASES WILL BE SENT OUT ONCE THE CHECKS CLEAR. ALL SALES FINAL!**

## MAIN EVENT AUCTIONS

"We make your sale the main event"

See our web site for more pics & details: [www.maineventauctions.com](http://www.maineventauctions.com)

There will be lots of iron

12' High x 13' wide heavy duty shop gantry/chain hoist



Polaris 325 magnum 4x4 and Honda 4Trax 4 whlr 2 whl dr., not running



Link Belt LS 2700 Trackhoe w/thumb runs, the drive is out on one side



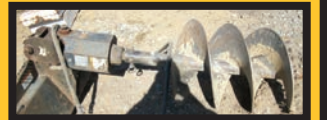
2- '99 Hillsborough 300 14K goose neck trailers, 20' w/ 4' beavertail.



Tyler gravel screen w/3'x10' screens 20hp 3ph



Tandem dually, pintle hitch equipment trailer



Bobcat 15C auger head.

### HOUSEHOLD/LAWN & GARDEN



Some of the furnishings may not be available at sale time, call prior to the sale if you are traveling (for the furniture). Beautiful top of the line furnishings, queen bedroom set with carved headboard and footboards, oak plant stand, large flat screen TV, solid hardwood bedroom furnishings, oak dining set w/ 6 ladder back chairs, press back oak chair. Full-size bedroom set w/bookrack headboard, highboy etc, children's school desks, hardwood crib, Heavy carved back cabriolet legged upholstered oak chairs, oak bar stools, modern round oak center pedestal paw foot table w/leaf and 4 oak press back chairs, picture display stands, cedar blanket chest handmade by Kevin Westweat, Oak overstuffed chair, pine "country style" love seat, Matching modern floral pattern couch and love seat, hardwood computer desk, oak entertainment center, 10' trampoline w/netting guard, variety of household and lawn and garden items, 12 cu ft chest type freezer, 3 sets lockable file cabinets, broadcaster, Cub Cadet LTX 1045 hydrostatic dr riding mower, canister vac, Yard Machine riding mower, garden hose and reel, Yard Machine 4 1/2 hp 21" push mower, MTD push mower, Yard Machine rototiller, 4' wooden step ladder,



Tracker "Super Guide" V16 16' fishing boat w/ Merc 40 hp, Eagle locator, rods, reels, 2 tanks, new battery, Tracker Trail star trailer, Minnkota Trolling Motor.

Approx 50 yds of 1 1/2" washed rock, 5 yds 3/4" rock, 5 yds pea rock

LOADING AVAILABLE- LOCAL TRUCKING FIRMS AVAILABLE

**DARIN LEE**  
 Professional Auctioneer  
 MN Lic. # 15-11  
 (218) 358-1168  
 Bagley, MN

